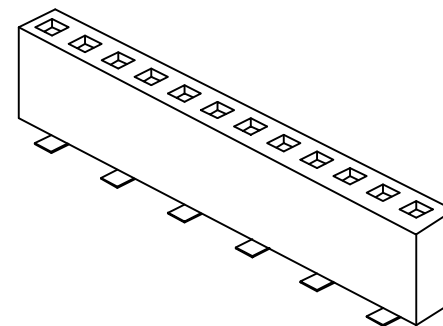
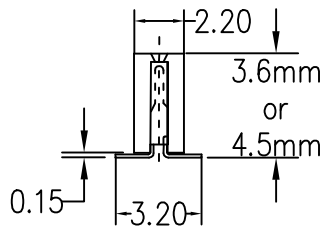
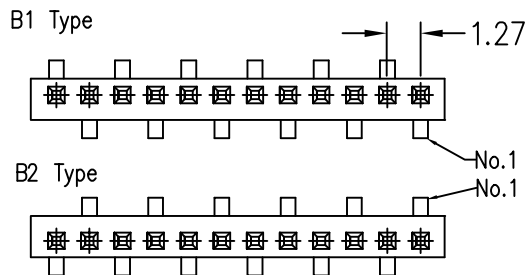
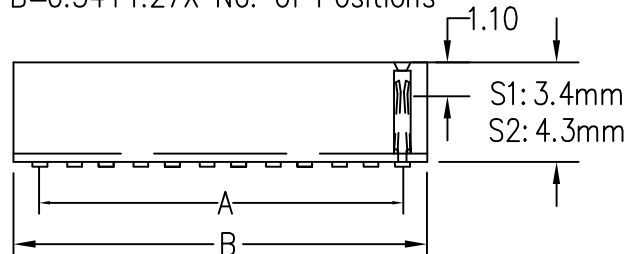


2162A3 FEMALE HEADER

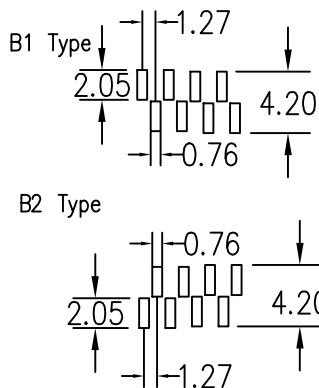
Single Row/SMT Type 1.27mm



$A = 1.27 \times (\text{No. of Contacts} - 1)$
 $B = 0.34 + 1.27 \times \text{No. of Positions}$





P.C.B LAYOUT



ORDER INFORMATION:

2162A3 1X ?? -HS -D1 -B1 -G
 Contact Plating: G: Gold Fflash
 B1 Type
 B2 Type
 Height: D1: 3.6mm
 D2: 4.5mm
 HS: SMT Type
 No of Contacts 3~36

SPECIFICATIONS
 CURRENT RATING: 1AMP
 INSULATOR RESISTANCE: 5000MΩMIN
 DIELECTRIC WITHSTANDING: AC 500V
 OPERATING TEMPERATURE: -40°C ~ +105°C
 MAX PROCESSING TEMP: 230° for 30SECONDS
 CONTACT MATERIAL: PHOSPHOR BRONZE OR BRONZE
 INSULATOR MATERIAL: POLYESTER UL94V-0
 NYLON-6T
 FINISH: GOLD FLASH

 易昕企業有限公司 LEAMAX ENTERPRISE CO., LTD.					
PROJ		SCALE : F DO NOT SCALE DWG	MOLD NO 2162A3		
APP			MODEL	FILE NO	REV. X1
CHK	CCJ	90.09.04	UNIT MM	SHT 1 OF 1	SIZE A4
DGN	AMY	90.09.04			
DRW	SHIEH	90.09.04			