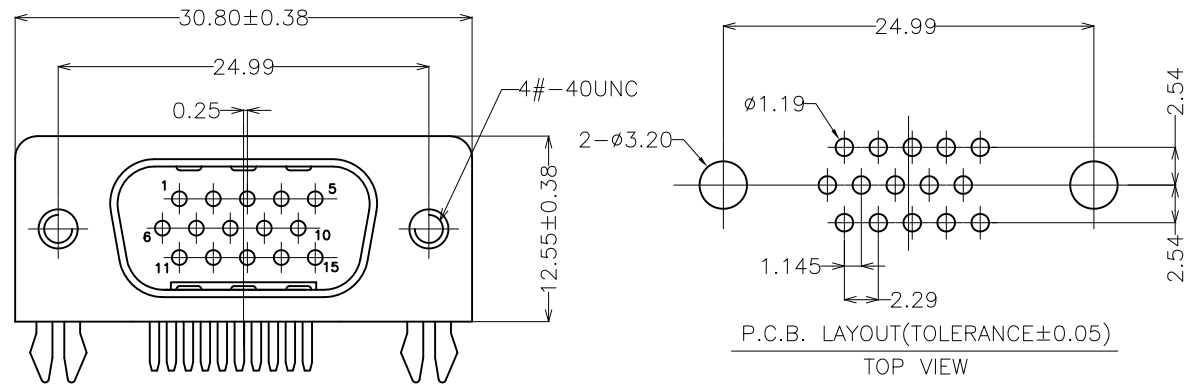


REV.	NOTES	DATE
A	RELEASED	25-09-17



**NOTES:**

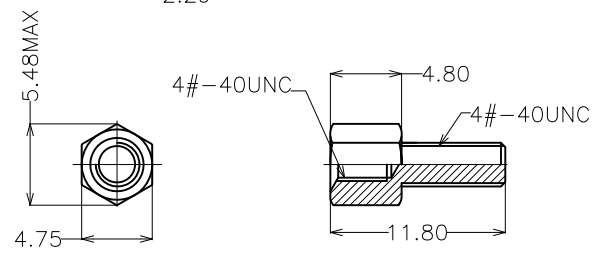
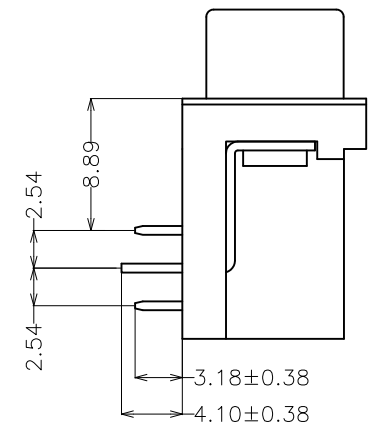
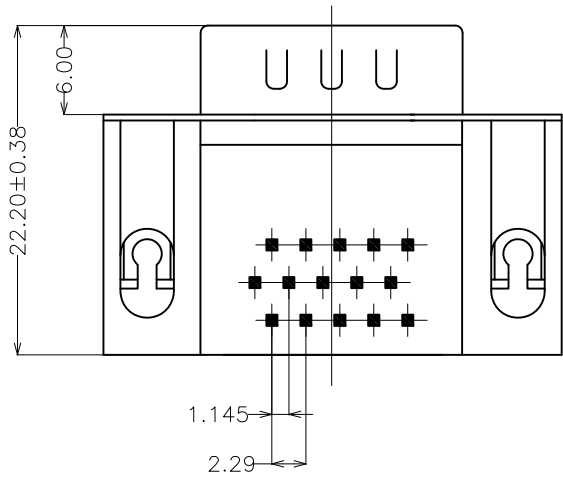
- 1.MATERIAL**
- 1.1 Insulator:PBT+30%Glass Fiber (UL94V-0)
  - 1.2 Contact: Brass
  - 1.3 Contact: Gold Plated
  - 1.4 Shell:Steel Nickel Plated
  - 1.5 Screw: Brass ,Nickel Plated
- 2.SPECIFICATION**
- 2.1 Current Rate:3 Amps
  - 2.2 Insulator Resistance:1000MΩ Min.
  - 2.3 Dielectric Strength:500V AC Per minute
  - 2.4 Operation Temperature:-40 °C to+85 °C
  - 2.5 Contact Resistance:30mΩ Max

Order Information

PART NO. 3228-15RPB3GE

Housing Color ————  
B:Black

Contact Plating  
G:Gold Plated



**DIMENSIONS TOLERANCE**

**METRIC**

.0= ±.5  
.00= ±.30  
.000= ±.20  
.0000=±.  
ANG.= ± 2'

UNITS	mm	易昕企業有限公司 LEAMAX ENTERPRISE CO., LED.							
QT'Y	N/A								
MT'L	SEE NOTE	TITLE							
FINISH	SEE NOTE	HDR 15公8.89鉚附全金黑 3.18 RoHS							
DWG. WANG 25-09-17		DWG NO. 3228-PA3							
CKD. HUANG02-10-17		PN:3228-15RPB3GE							
APPD. CHEN 24-10-17		SCALE	1/1	SIZE	A4	SHEET	1	REV.	A