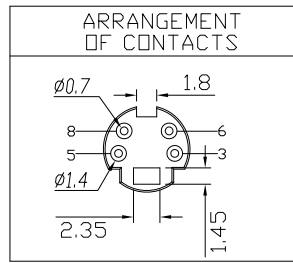
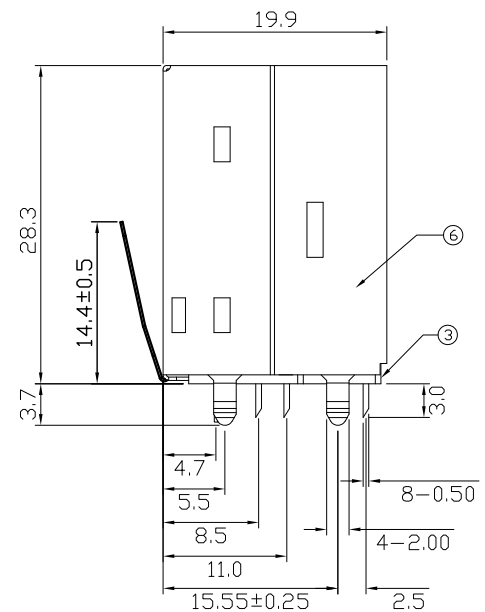
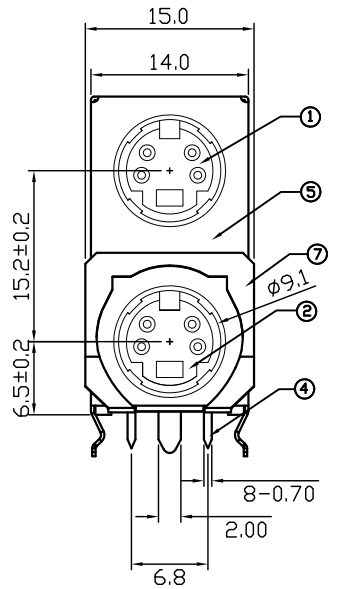
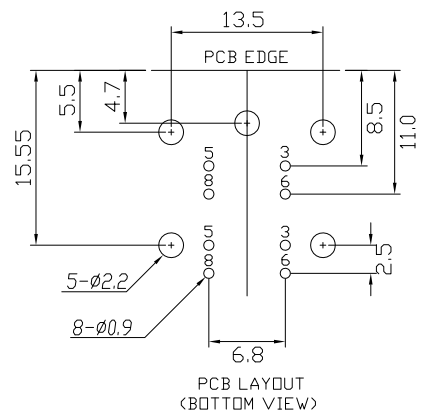


| REV | ZONE | REVISION | DATE |
|-----|------|----------|------|
|     |      |          |      |
|     |      |          |      |



**Specification:**  
**Contact Resistance: 30m Ohm Max.**  
**Insulation Resistance: 100M Ohm Min.AT 500V DC**  
**Rated Voltage And Current: DC12V.2A Max;AC 100V.1A Max**  
**Dielectric Withstanding Voltage: 250V AC For 1 Minute**  
**Durability (Life Test): 100 Cycles**  
**Insertion Force: 4.0KG Maximum.**  
**Extraction Force: 0.9KG Minimum.**



| NO. | NAME           | MATERIAL           | FINISH          | REMARK  | Q'TY |
|-----|----------------|--------------------|-----------------|---|------|
| 1   | TOP HOUSING    | PBT G.F.           | BLACK           |   | 1    |
| 2   | BOTTOM HOUSING | PBT G.F.           | BLACK           |   | 1    |
| 3   | BACK COVER     | PBT G.F.           | BLACK           |   | 1    |
| 4   | CONTACT TERM.  | PHOS. BRONZE T:0.2 | GOLD/TIN PLATED | Gold:1~3u"; NI:40~60u"; TIN:120u"<br>(100% pure Tin of lead free plating) | 8    |
| 5   | FRONT SHIELD   | BRASS T:0.3        | TIN PLATED      | TIN:120~200u"   | 1    |
| 6   | BACK SHIELD    | BRASS T:0.3        | TIN PLATED      | TIN:120~200u"   | 1    |
| 7   | SPRING SHIELD  | STAINLESS T:0.2    |                 |   | 1    |

**LEAMAX** 易昕企業有限公司  
 LEAMAX ENTERPRISE CO.,LED.

|                   |                     |                  |          |   |                    |      |  |
|-------------------|---------------------|------------------|----------|---|--------------------|------|--|
| Drawing No        |                     |                  | UNIT     | SCALE   | TITLE              |      |  |
| 3260-005          |                     |                  | mm       | 1:1   | MINI DIN JACK DUAL |      |  |
| APPD.             | CKD.                | DWG.             | DATE     | TOLERANCE                                       | PART NO.           | REV. |  |
| JAMES<br>08-04-16 | SHIRLEY<br>02-11-15 | TINA<br>23-04-10 | 23-04-10 | X. ±0.38<br>.X ±0.25<br>.XX ±0.13<br>.XXX ±0.05 | 3260-S4AF          | A3   |  |

MODEL 3260-S4AF PAGE 1 OF 1