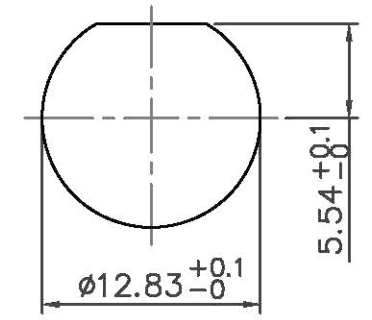
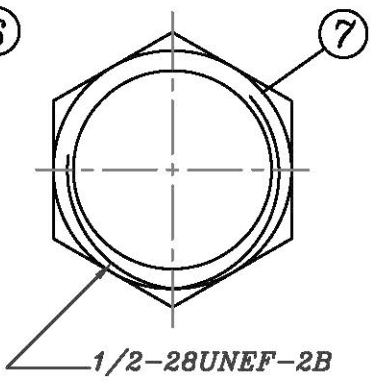
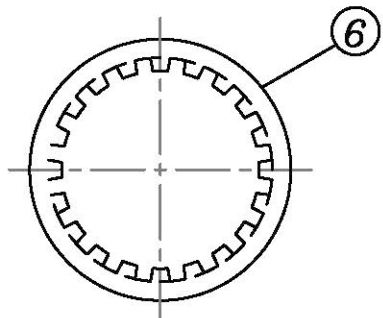
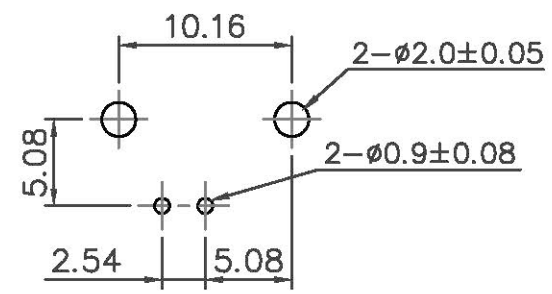
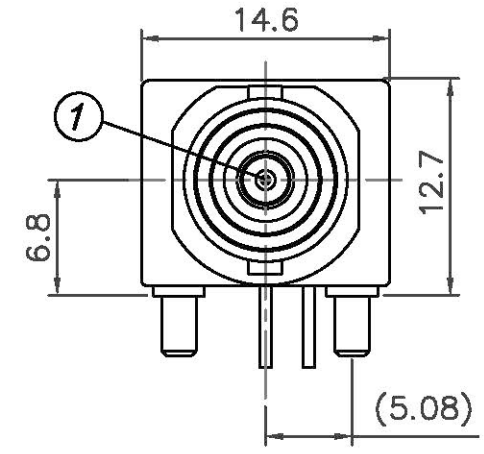
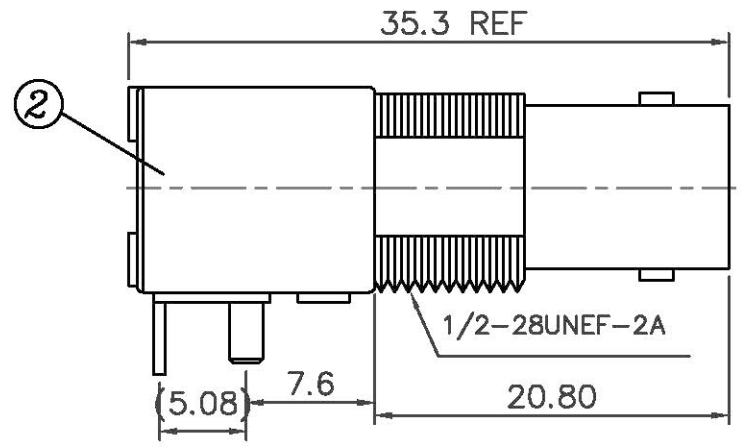
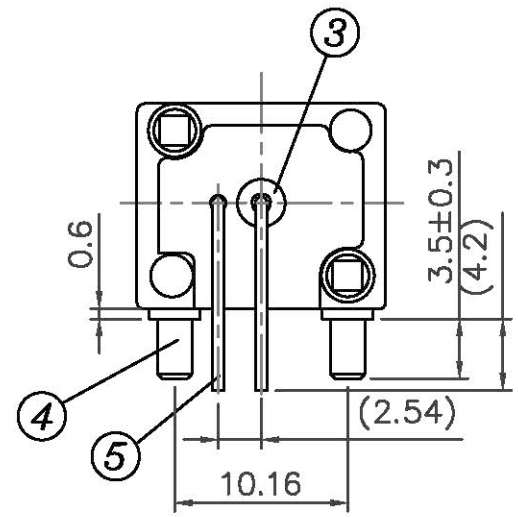


REV	ECO	DESCRIPTION	DRAWN	DATE
C	BC10120005	SEE ECO	jean_ke	29-12-10



RECOMMENDED PC BOARD LAYOUT
WITHOUT MOUNTING POSTS

LOCK WASHER

CLAMP NUT

RECOMMENDED MOUNTING HOLE
MAXIMUM PANEL THICKNESS: 5.5MM

MATERIAL & FINISH

- ① CENTER CONTACT : PHOSPHOR BRONZE, GOLD PLATING
- ② BODY : ZINC ALLOY, NICKEL PLATING
- ③ INSULATOR : PE-606
- ④ MOUNTING POST : BRASS, TIN PLATING
- ⑤ SOLDER TAIL : COPPER WIRE, TIN PLATING
- ⑥ WASHER : STEEL, NICKEL PLATING
- ⑦ NUT : BRASS, NICKEL PLATING

PART NUMBER 3281500-2	DWG. Jean_Ke	DATE 07-03-18	易昕企業有限公司 LEAMAX ENTERPRISE CO., LTD.
MATERIAL SEE NOTE	CKD. Huang	DATE 02-05-18	
FINISH SEE NOTE	APPD. James	DATE 18-05-18	50ΩBNC R/A PCB MOUNT JACK, METAL BODY WITH FITTING DWG NO. 3281-001
THIRD ANGLE PROJECTION	UNLESS OTHERWISE SPECIFIED: DIMENSIONS ARE IN mm TOLERANCES ARE: X. ± 0.5 XX ± 0.3 XXX ± 0.2 ANGLES ± 3 DEG		
DO NOT SCALE DRAWING		SCALE 2:1	CAD FILE ERP SHEET 1 OF 1 REV C