

REV	ECN NO.	DESCRIPTION	DATE	APP'D
C/D		RELEASE TO PRODUCTION		Paul

Features:

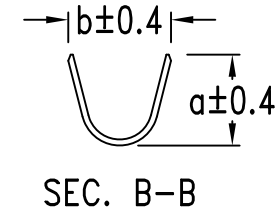
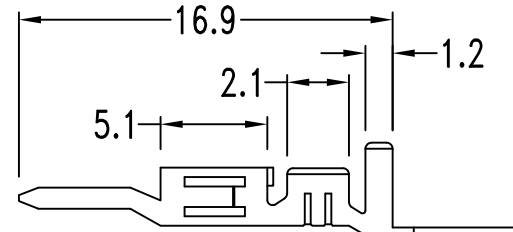
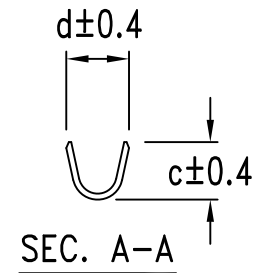
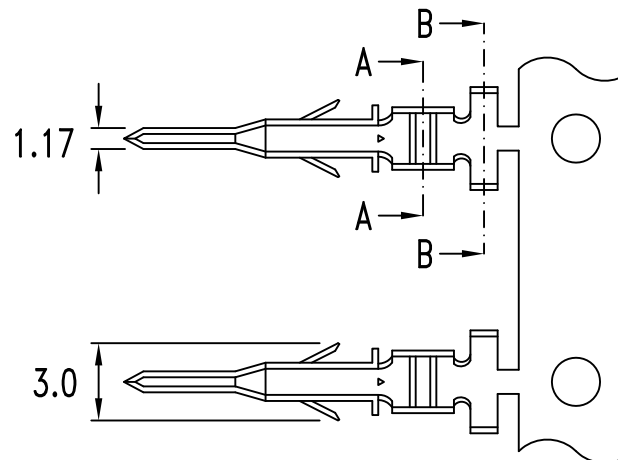
- 600V volts rating (R.M.S.)
- Thickness: 0.2mm


Specifications:

- Voltage rating: 600V AC, DC
- Current rating up to 9A (with #18 AWG)
- Dielectric withstanding Voltage: 1500V AC/minute
- Contact resistance: Initial value/10mΩ Max.
After environmental testing/20mΩ Max.
- Crimp resistance: 5mΩ Max,
- Terminal retention force: 3.0Kg Mn.
- Ambient temperature range: -40°C ~ 105°C
(including temperature rise)

Ordering & Dimensional Information (mm)

Part No.	Dimension				Wire Size	Material	Finished
	a	b	c	d	(AWG)		
4310-00TME	4.5	3.6	2.3	1.9	#18 ~ #24	Brass	Tin-plated



TOLERANCE	APPROVALS		DATE	 易昕企業有限公司 LEAMAX ENTERPRISE CO., LED.	
	.000 ± 0.08 (mm) .00 ± 0.25 (mm) .0 ± 0.40 (mm)	DRAWN	Daniel		20-08-03
		CHK'D	Huang		01-04-15
		APP'D	Chen		03-06-15
	UNTS mm	SCALE 1:1	SIZE:A4	SHEET 1 OF 1	

TITLE: .165*(4.2mm) Male Crimp Terminal

DWG NO.4310-TM1

REV. C/D