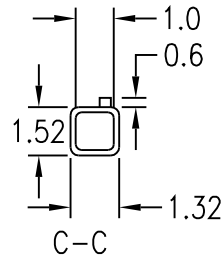
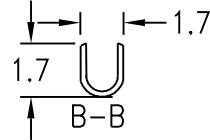
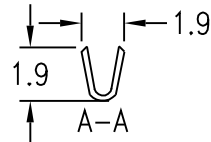
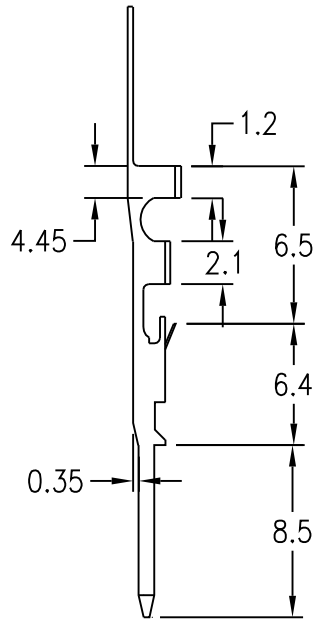
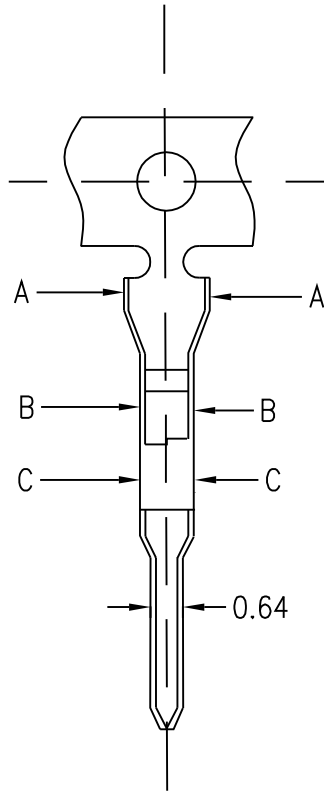


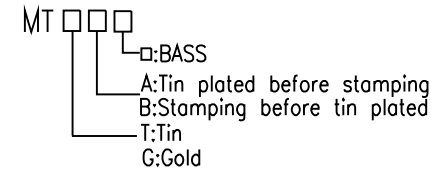
2.54mm(.100") Pitch Crimp Terminal


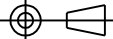


Features:

- * accepts AWG #22 ~ #30 wire range
- * Material :Brass
- * Finish:Stamping before tin plated
- * Qty/reel:15000pcs

Ordering Information:



| | | | | | |
|--|---|-------------------------------|---------|------------|---------|
|  易昕企業有限公司 LEAMAX ENTERPRISE CO., LED. | | | | | |
| PROJ |  | SCALE : F DO NOT SCALE DWG | MOLD NO | 4326T | |
| APP | | | MODEL | FILE NO | REV. X1 |
| CHK | CCJ | 90.07.02 | UNIT | SHT 1 OF 1 | SIZE A4 |
| DGN | WU | 90.07.02 | MM | | |
| DRW | SHIEH | 90.07.02 | | | |