



RoHS Compliant

REV	MODIFICATION	DATE	DRAW
A1	Release To ECN20110809	09-09-11	Ivy
A2	Release To ECN20130208	27-02-13	Seven
A3	Refer To ECN20180103	19-01-18	Luchs

Specification

- 1.Current Rating:7A
- 2.Voltage Rating:250V AC/DC
- 3.Contact Resistance:10mΩ Max.
- 4.Insulation Resistance:1000MΩ Min. At DC 500V
- 5.Withstand Voltage:1500 VAC/Minute
- 6.Operating Temperature:-25℃~+85℃

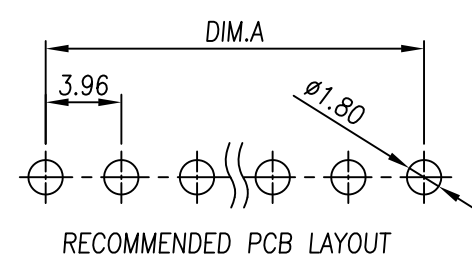
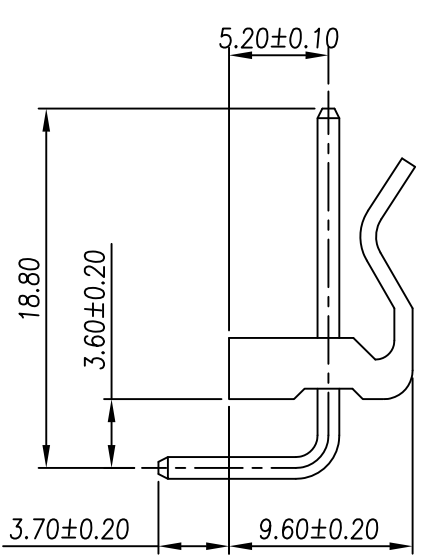
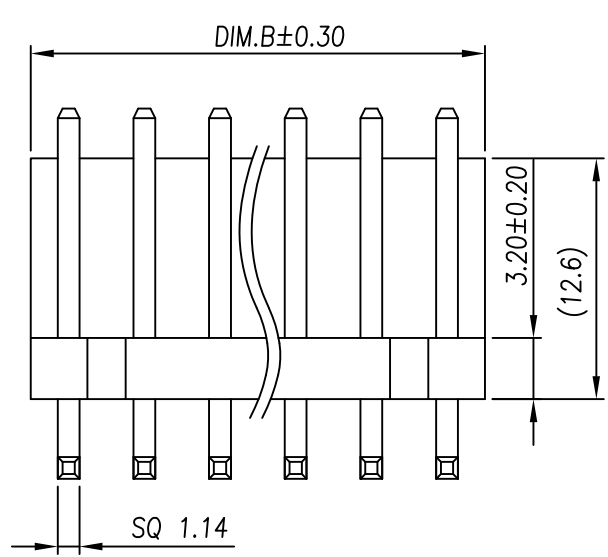
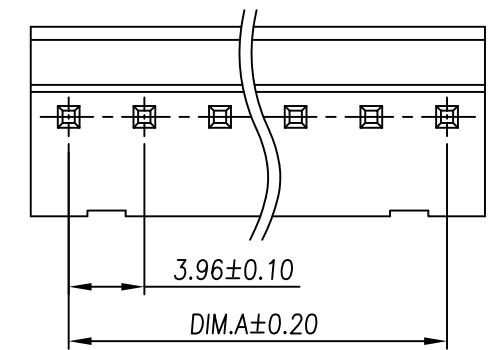
Material:

- 1.Housing:Thermoplastic UL94V-2
 - 2.Contact Pin:Copper Alloy SQ Pin=1.14mm
- Finish:
- 1.Housing:Natural
 - 2.Contact Pin:Bright Tin Plated Over Nickel.

Part No.: 4 3 3 A - x x R N 1 5

Number of Pin 02~12 Housing Material N:NY66 UL94V-2 Natural

PIN	DIM.A	DIM.B	PIN	DIM.A	DIM.B
02	3.96	8.00	08	27.72	31.90
03	7.92	12.00	09	31.68	35.80
04	11.88	15.90	10	35.64	39.90
05	15.84	20.00	11	39.60	43.90
06	19.80	24.00	12	43.56	47.80
07	23.76	27.90			



易昕企業有限公司
LEAMAX ENTERPRISE CO., LED.

TOLERANCE UNLESS OTHERWISE SPECIFIED		PROJ.	TITLE: Wire To Board Wafer 3.96mm 90° DIP Single Row			
.x± 0.35	x.*± 2°	APR. Chen 20-08-18	DWG NO.433A-001			
.xx± 0.25	.x.*± 1°	CHK. Huang 01-08-18	UNITS: mm	PN:433A-xxRN15		
.xxx± 0.15	.xx.*± 0.5°	DRA. Luchs 19-01-18	SIZE: A4	SCALE: 5:2	SHEET 1/1	REV A3 V