

RoHS Compliant

REV	MODIFICATION	DATE	DRAW
A5	Release To ECN20131003	09-10-13	Michelle
B0	Release To ECN20131013	31-10-13	Michelle
B1	Refer To ECN20180103	04-01-18	Luchs

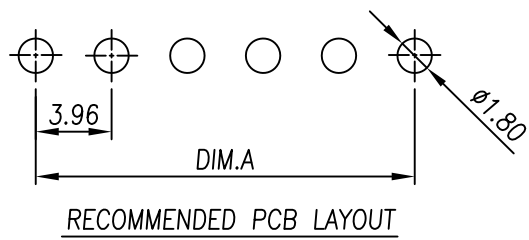
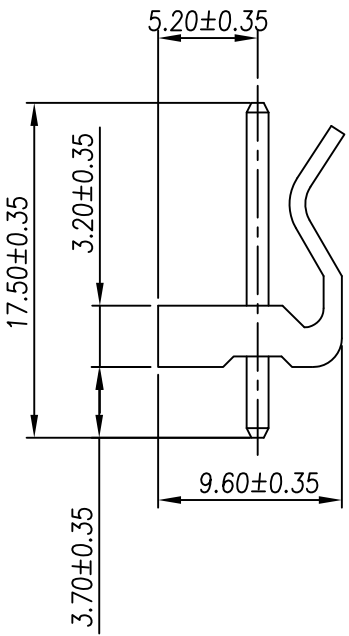
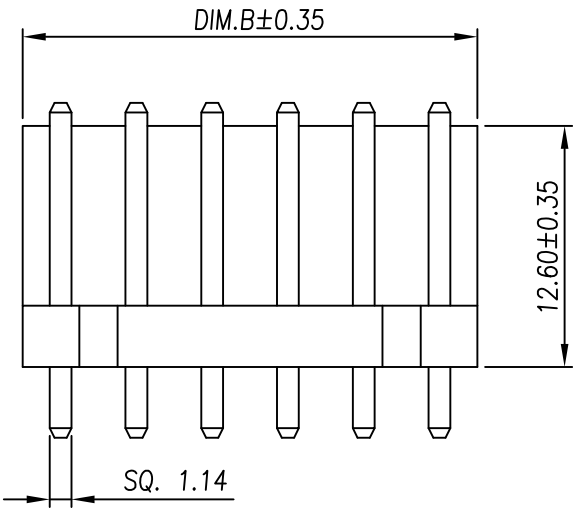
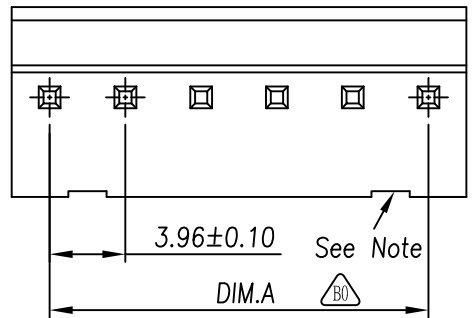
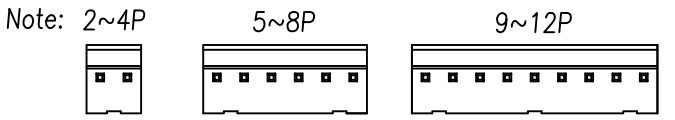
02~12P DIM.A±0.30 ; DIM.B±0.35

PIN	DIM.A	DIM.B
02	3.96	7.92
03	7.92	11.88
04	11.88	15.84
05	15.84	19.80
06	19.80	23.76
07	23.76	27.72
08	27.72	31.68
09	31.68	35.64
10	35.64	39.60
11	39.60	43.56
12	43.56	47.52

Specification
 1.Current Rating:7A
 2.Voltage Rating:250V AC/DC
 3.Contact Resistance:10mΩ Max.
 4.Insulation Resistance:1000MΩ Min. At DC 500V
 5.Withstand Voltage:1500 VAC/Minute
 6.Operating Temperature:-25℃~+85℃

Material:
 1.Housing:Thermoplastic UL94V-2
 2.Contact Pin:Copper Alloy SQ. Pin 1.14mm
 Finish:
 1.Housing:Natural
 2.Contact Pin:Bright Tin Plated Over Nickel.
 Part No.: 4 3 3 A - x x S N 1 5

Number of Pin 02~12
 Housing Material N:NY66 UL94V-2 Natural



易昕企業有限公司
LEAMAX ENTERPRISE CO., LED.

TOLERANCE UNLESS OTHERWISE SPECIFIED		PROJ.	TITLE: Wire To Board Wafer 3.96mm 180° DIP Single Row			
.x± 0.35	x.*± 2'	APR. Chen 21-08-18	DWG NO.433A-002			
.xx± 0.25	.x*± 1'	CHK. Huang 01-08-18	UNITS: mm	PN:433A-xxSN15		
.xxx± 0.15	.xx*± 0.5'	DRA. Luchs 04-01-18	SIZE: A4	SCALE: 5:2	SHEET: 1 / 1	REV B1 V