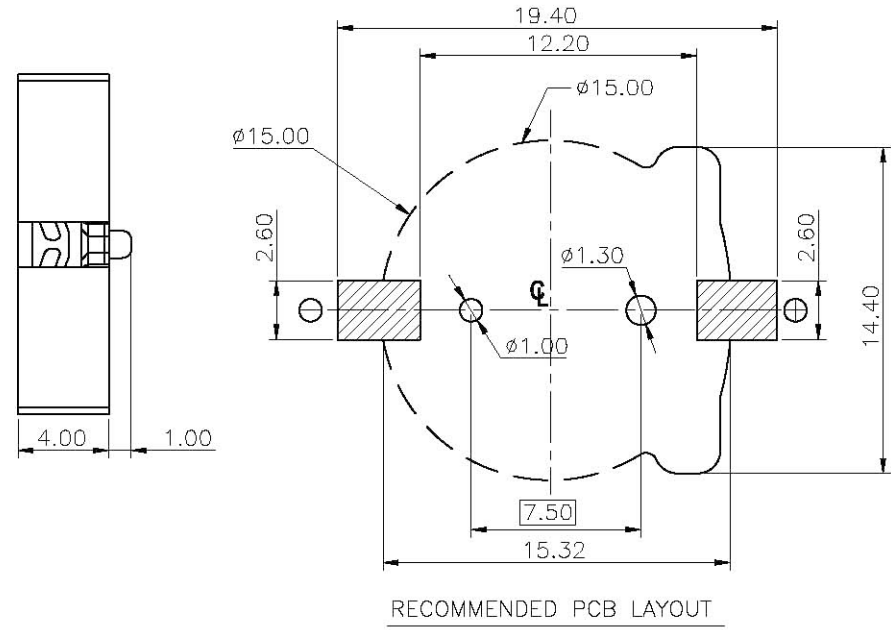
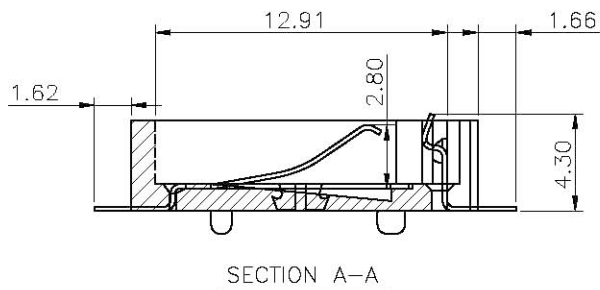
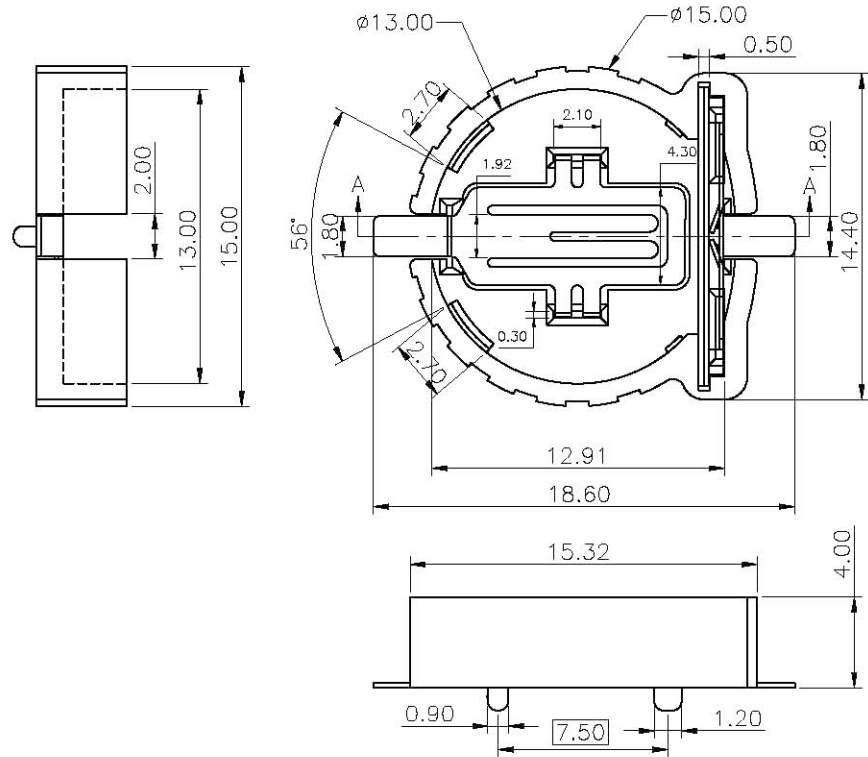

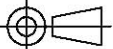


REV.	ECN NO. / DESCRIPTION	DATE



NOTES:

- 1.DIMENSIONS ARE IN MILLIMETERS.
- 2.MATERIAL:
PLASTIC PART:PPS WITH 30% GLASS FIBER_COFFEE.
CONTACT:COPPER ALLOY.
PACKING: TRAY PACKING
- 3.FINISH:
CONTACT: Ni50u'' UNDERPLATING, GOLD PLATED ALL OVER THE FACE.
- 4.RoHS COMPLIANT.

GENERAL TOLERANCES UNLESS SPECIFIED		PN.4340-R4E	 易昕企業有限公司 LEAMAX ENTERPRISE CO., LTD.			
X ±0.35	X° ±3°					
XX ±0.25	X° ±2°					
XXX ±0.15	XX° ±1°	APP: James 2011/11/14	TITLE BATTERY HOLDER FOR CR1220			
CUSTOMER DRAWING		CHK: Shirley	DWG NO.4340-004			
SIZE	UNITS	DRW:Huang		SHEET	SCALE	REV
A4	MM[INCH]			1 / 1	3:1	2A