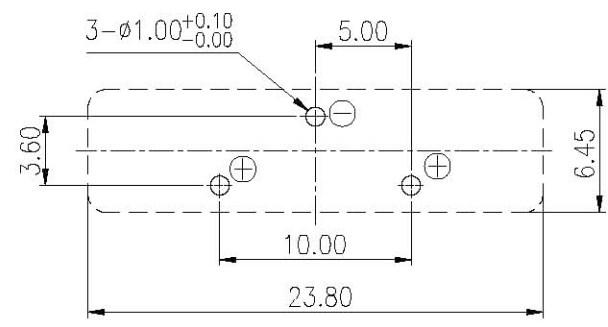
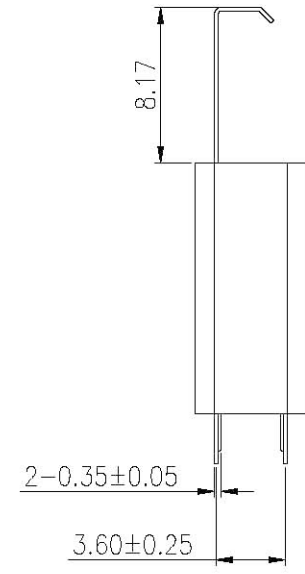
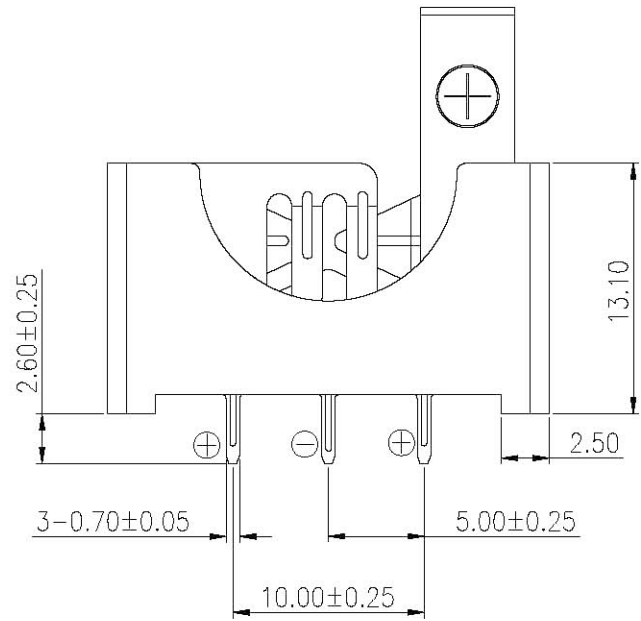
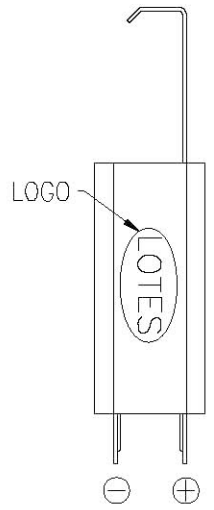
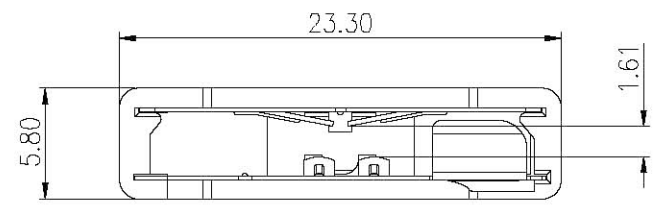


REV.	ECN NO./DESCRIPTION	DATE



RECOMMENDED PCB LAYOUT(TOP VIEW)  
(PCB THICKNESS:T=1.60mm)(TOLERANCE:±0.05)

NOTES:

- MATERIAL:  
HOUSING:PA66+30%GF,UL94V-0;COLOR:BLACK  
CONTACT:PHOSPHOR BRONZE(C5191).
- RECOMMENDED PCB THICKNESS:1.60±0.05mm.
- PLATING SPEC.: BRIGHT TIN100μ" MIN. PLATED ALL OVER;Ni50μ" MIN. UNDERPLATING.
- ELECTRICAL PERFORMANCE,  
4-1.LLCR:30mΩ MAX.  
4-2.INSULATION RESISTANCE:1000MΩ MIN.  
4-3.DIELECRIC WITHSTAND VOLTAGE: 1000V AC FOR 1 MINUTE.
- THE REFER SOLDERING CONDITIONS:  
WAVE SOLDER:CONNECTOR MOUNTED ON THE PCB,THE  
TEMPERATURE OF THE SOLDER SHALL BE 260°±5°C  
FOR 10±1SECONDS.
- LEAD FREE

GENERAL TOLERANCES UNLESS SPECIFIED		PN.4340-V1E	易昕企業有限公司 LEAMAX ENTERPRISE CO., LTD.
X± 0.35	X°± 3°		
XX± 0.25	X°± 2°		
XXX± 0.15	XX°± 1°	APP: James 2011/11/14	TITLE BATTERY HOLDER FOR CR2032
CUSTOMER DRAWING		CHK: Shirley	DWG NO.4340-005
SIZE	UNITS	DRW:Huang	SHEET 1/1 SCALE 1:1 REV 6
A4	MM[INCH]		